

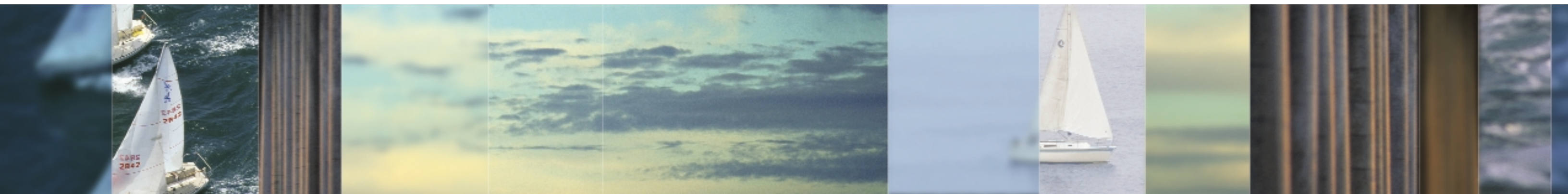


Staying Focused

ANNUAL REPORT 2002 - 2003



401 Ocean Boulevard, Suite 1000 • Long Beach, CA 90802-4933
phone: 562-590-8655 • fax: 562-495-0317
archstone@archstone.org • www.archstone.org



The Archstone Foundation is a private grantmaking organization, whose mission is to contribute toward the preparation of society in meeting the needs of an aging population.



Mission Statement

Our resources are used to address the following four issue areas:

- Elder Abuse Prevention;
- Fall Prevention;
- End-of-Life Issues; and
- Responsive grantmaking to address emerging needs within society's aging population.

Mission Statement	1
Board of Directors Listing	5
Staff Listing	5
Message from the Board	6
Elder Abuse	7
Fall Prevention	9
End-of-Life	11
Responsive Grantmaking: Addressing Community Needs	13
• Access to Care	15
• Adult Day Services Expansion	17
• Caregiver Support	19
• Disability Services	20
• Mental Health	21
• Professional Education and Training	23



Table of Contents

New Grants Authorized in FY 2002	25
Continuing Grants Renewed in FY 2002	26
New Grants Authorized in FY 2003	28
Continuing Grants Renewed in FY 2003	29
FY 2002/2003 Financial Statements	31
Resources & Credits	37
Grant Guidelines and Procedures	38



Hon. John T. Knox, J.D.
Chairman
Board member since 1991
Partner,
Nossaman, Guthner,
Knox & Elliott



Joseph F. Prevratil, J.D.
President and CEO
Board member since 1987
President,
RMS Foundation



Len Hughes Andrus, M.D.
Board member since 1993
Professor Emeritus,
University of California, Davis



Robert C. Maxson, Ed.D.
Board member since 1994
President,
California State University, Long
Beach



J.W. Peltason, Ph.D.
Board member since 1987
President,
Donald Bren Foundation



Hon. Renee B. Simon, M.S., M.L.S.
Board member since 1991
President,
Institute for Management
Communication



Mark D. Smith, M.D., M.B.A.
Board member since 1998
President and CEO,
California HealthCare
Foundation



Rocky Suarez, C.F.P.
Board member since 2002
Senior V.P. Investments,
A.G. Edwards & Sons, Inc.



Hon. Harriet M. Wieder
Board member since 1992
President,
Linkage

Message From The Board

*“Resolution of a current crisis
is best achieved by focusing on the future.”*

Fiscal years 2002 and 2003 brought forth many challenges for our nation, states and communities. The threat of terrorism, the downturn in the economy and war impacted us all. The marketplace was of particular threat to philanthropy, negatively impacting our endowments, especially at a time when our resources are most needed by the communities we serve. As we look to the future, many problems still loom before us. The State of California faces a \$38 billion budget shortfall. While the impact is still unknown, there remains great concern over the future of many health and aging services for the State’s older population - over 3.5 million Californians aged 65 and over.

Given these challenges, Archstone Foundation’s strategy is to stay focused on preparing our society to meet the needs of an aging population. In February 2003, the Board of Directors met to review the Foundation’s direction and update its strategic plan. The result was renewed commitment to our mission and focusing of priorities into four issue areas where change may be measured. In our 2002/2003 Annual Report, we highlight these four issue areas: elder abuse prevention, fall prevention, end-of-life issues, and responsive grantmaking to address emerging needs within society’s aging population.

In the year ahead, Archstone Foundation’s focus will be on the careful allocation of resources and implementation of innovative programming as we strive to improve the lives of society’s elders.

Staff



Mary Ellen Courtright, M.P.H.
Vice President and Program Officer



E. Thomas Brewer, M.S.W., M.P.H.
Program Associate



Denise B. Schulz
Office Manager



Tiffany M. Pinkelman
Administrative Assistant

John T. Knox, J.D.
Chairman

Joseph F. Prevratil, J.D.
President and CEO

It is estimated that approximately 2 million older adults are subjected to abuse, neglect and financial exploitation each year. It is a crime without boundaries, crossing all racial, social, class, gender and geographic lines. The rate of elder abuse is anticipated to increase as the United States population begins to age. Beyond the emotional, physical and economic toll of elder abuse, victims of such abuse are also three times more likely to die at an earlier age as a result of the abuse. Archstone Foundation is committed to preventing elder abuse and providing effective and compassionate interventions for those who have been abused.

Grantee:

University of California, Irvine
Irvine, California

Project:

Elder Abuse Forensic Center

Investment:

\$833,085 over three years

Outcomes:

- The Elder Abuse Forensic Center opened for services on May 12, 2003.
- Within the first six months of the program, a total of 23 elder abuse cases were referred and assessed by the Forensic Center team.

Collaborative Partners:

- Orange County Adult Protective Services provided \$50,000 to support program services.
- Orange County Adult Protective Services provided in-kind 5,000 square feet of office space where the Elder Abuse Forensic Center is housed.



Elder Abuse

The first of its kind, the Elder Abuse Forensic Center opened May 12, 2003 in Santa Ana, California and provides an array of coordinated services and assistance to seniors and adults with disabilities who have been abused or neglected. The Center is a multi-disciplinary service site comprised of a medical team, adult protective services, law enforcement, the criminal justice system, victim's advocates, and the aging service network. The Center offers multi-agency team case review and action plans, in-home medical and mental status evaluations, in-home evidentiary investigation, taped victim interviews and education. The Center serves as a training site for students in the fields of medicine, sociology, criminology, law and gerontology.

*...committed to preventing elder abuse
and providing effective and
compassionate interventions...*

The Center is also a national training site, where professionals from across the country gain useful training and consultation on the medical and forensic aspects of abuse and neglect, in-home medical and mental status assessment strategies, law enforcement requirements, evidentiary techniques, components of an effective criminal justice system, civil remedies, and steps in initiating inter-agency collaboration. The Center builds upon the achievements of the Vulnerable Adult Specialist Team (VAST), a multi-disciplinary team consisting of a geriatrician, nurse practitioner, psychologist, social worker and a pharmacologist. VAST funding was also provided by the Archstone Foundation.

Falls are a threat to the well-being of older Californians, approximately one-third of whom fall each year. While most falls result in minimal injury, more than 1.3 million Californians aged 65 and over suffer serious injury from falls, particularly hip fracture and head injury. On average, two older Californians die every day from fall-related injuries.

The medical cost of a senior fall-related hospitalization averages \$30,000, resulting in total annual hospitalization costs of over one billion dollars in California. The loss of independence that follows a serious fall may lead to institutionalization, contributing to escalating health care costs and an incalculable human cost. As Californians age, the risk of injurious falls will dramatically increase. The Archstone Foundation strives to prevent falls among California's older adults.

Grantee:

University of California, Los Angeles
California Geriatric Education Center
Los Angeles, California

Project:

Fall Prevention Conference Planning

Investment:

\$150,000 over one year

Outcomes:

- Synergetic participation of 162 representatives from public health departments, hospitals and health systems, health insurance plans, and social service agencies across the State of California.
- Creation of a statewide blue print planning process for advancing efforts to prevent and reduce falls within California's older adults.

Collaborative Partners:

- The California Wellness Foundation provided \$10,000 to support the conference and publication of the proceedings paper.
- The Veterans Association Greater Los Angeles Healthcare System provided program leadership, staff time for planning and facilitation.

Fall Prevention

The impetus for the invitational conference was a meeting in December 2001 when six projects funded by the Archstone Foundation, all of which had reducing falls in older adults as one of their intended outcomes, met to share resources and challenges. After a day of collaborative discussion they proposed a statewide working conference to find ways to share resources, coordinate care and reduce barriers on a much broader basis.

In February 2003, leaders of key stakeholder groups from around the State assembled in Sacramento to undertake statewide planning around fall prevention among older adults. The representative groups participating included: aging services and programs; public health; local, regional and statewide legislators, policy analysts, and civic leaders; advocacy groups; consumer and voluntary organizations; academic faculty in geriatric

*“We are all one fall away from...
hospitalization, a nursing home,
or disability...” - Fernando Torres-Gil, PhD*

medicine and gerontology; and the health care industry. Conference participants were provided with a White Paper that reviewed the significance of injurious falls to older adults, provided an overview of the State's current infrastructure, and highlighted best practices to prevent falls and reduce fall risk. Utilizing plenary sessions and small working groups, participants engaged in dialogues fostering information sharing and planning. The result was the development of a conference proceedings document and the initiation of a fall prevention planning process for the State of California.

The majority of adults over the age of 65 prefer to die at home, yet less than 25% actually do die in their homes (Public Opinion Quarterly, 1999). Most older adults die in either a hospital or nursing home following extensive life-prolonging care and treatments. While death is an inevitable part of human life, the practice of palliative care ensures that older adults who either die at home or within an institutional setting are able to do so with dignity. Archstone Foundation is dedicated to improving the end-of-life experience for all elders.

Grantee:

Zen Hospice Project: Institute on Dying
San Francisco, California

Project:

End-of-Life Counselor Training Program

Investment:

\$50,000 over two years

Description:

The End-of-Life Counselor Training Program is a unique professional training program that incorporates the spiritual dimensions of dying by introducing the contemplative and practical tools to move the experience of loss into transformation. Program participants build skills in clinical practice, counseling, and spiritual services through seminars and experiential learning while caring for those dying.

Outcomes:

- Developed a one-year curriculum for end of life practitioners.
- Forty-one counselors completed the training program.

Collaborative Partners:

- The Richard & Rhoda Goldman Fund provided \$100,000 to support the Institute on Dying and End-of-Life Counselor Training Program.



End-of-Life

Grantee:

San Diego Hospice And Palliative Care
San Diego, California

Project:

End-of-Life Care Education Program

Investment:

\$41,650 over one year

Outcomes:

- In the first six months, 123 nursing students participated in the End-of-Life Care Education Program.
- A total of 2,822 hours of hands-on in-patient hospice and palliative clinical training were provided.

Collaborative Partners:

- Schools of Nursing at San Diego State University, the University of San Diego, Point Loma Nazarene University, Maric College, and Southwestern College have incorporated palliative and hospice care into their respective programs.
- The HCR ManorCare Foundation provided \$25,000 to support nursing education.

In collaboration, the San Diego Hospice, the Center for Palliative Studies, and Schools of Nursing at San Diego State University, the University of San Diego, Point Loma Nazarene University, Maric College, and Southwestern College provide instruction to nursing students on the core competencies of palliative care.

The instruction uses an eight-module curriculum that addresses nursing care at the end-of-life, interdisciplinary team work, pain management, symptom management, communication, ethical and legal issues, preparation and care for the time of death, and grief, loss and bereavement. The comprehensive curriculum offers students the opportunity to build clinical knowledge, interpersonal skills, ethical awareness, and case-based care experiences with advanced chronic ill and terminally ill patients.

In the United States, there are an estimated 35 million people age 65 or older, accounting for almost 13 percent of the total population (Census 2000). In 2011, the "baby boom" generation will begin to turn 65. By year 2030, the United States Census projects that one in five people will be age 65 or older, a total of 70 million older adults.

Today, California is home to over 3.5 million residents over the age of 65, the largest adult population in the United States. Among California's older population, persons over the age 85 are the fastest growing segment of the population. Already, California's network of aging services are a patchwork of private and public social and health programs working to address the needs of uninsured, infirmed, isolated, disabled, and frail older adults. As our nation and the State of California respond to the changes in the economy and make tough decisions with budget shortfalls, the patchwork of aging service providers will teeter in a fragile balance.



Responsive Grantmaking

Directing resources to unmet needs.

Archstone Foundation's responsive grantmaking is a result of our dedication to direct resources to unmet needs and support the fragile aging network. The following are examples of our responsive grantmaking:

- Access to Care
- Adult Day Services
- Caregiver Support
- Disability Services
- Mental Health
- Professional Education and Training

The challenge of limited access to social and health resources for California’s children, minorities and older adults continues to grow. The State of California has a poverty rate of over 14%, whereas the national average is 12.4%. Among Los Angeles County residents the poverty rate is 17.9%. This is of particular concern as the aging population continues to grow. As hospitals, clinics and social service agencies close, communities will become more isolated, limiting access to needed social and health services.

Grantee:
Los Angeles Free Clinic
Los Angeles, California

Project:
Dental and Case Management Services for Seniors

Investment:
\$32,300 over one year

Description:
The Centers for Disease Control and Prevention report that about 30% of adults aged 65 and older do not have their natural teeth. Older adults who are living in poverty, disabled, isolated, and lacking insurance are at greatest risk for poor oral health. The Los Angeles Free Clinic’s Dental Clinic provides low-income seniors access to quality dental care. In addition to dental services, the Clinic provides case management services linking older adults to community resources that improve both social and health outcomes.

Outcomes:

- Served 204 unduplicated patients with 796 dental service visits.
- Provided 98 seniors with 390 case management service visits.

Collaborative Partners:

- The University of California, Los Angeles School of Dentistry provided full or partial dentures to seniors through its community dentistry partnership program.



Access to Care

Grantee:
Latino Health Access
Santa Ana, California

Project:
Cuidar, Puerta a Puerta (Care, Door-to-Door)

Investment:
\$100,000 over one year

The challenge of limited access to social and health resources continues to grow.

Description:
In response to the growing number of low-income, isolated and frail Hispanic elders in Orange County, the Cuidar, Puerta a Puerta program introduces the use of community health workers in assisting older adults. Employing a door-to-door outreach strategy, community health outreach workers identify Latino elders in need of services. The program provides competent and compassionate care to older adults offering home and community-based choices for improved health outcomes.

Outcomes:

- Conducted outreach to 6,991 elders;
- Assessed 1,642 elders;
- Assisted 161 elders with completing eligibility and benefit applications;
- Referred and directly linked 1,030 elders to services.

Collaborative Partners:

- The Board of Supervisors of Orange County provided \$272,333 to support program services.

In the year 2030, there will be six caregivers per person age 85+ as compared to 21 caregivers in 1970 (RWJF, 1996). The shortage of informal caregivers for our aging population calls attention to the need for adequate services for tomorrow's elder. Adult Day Care Services and Adult Day Health Services, referred here as Adult Day Services, provide frail elders who do not need 24-hour skilled care a range of health and social services and provide their caregivers with respite.

Grantee:
Acacia Adult Day Services
Westminster & Cypress, California

Project:
Expansion of Adult Day Services Program

Investment:
\$225,000 over three years

Description:
In response to the growing frail older adult population in Orange County, California, Acacia Adult Day Services opened two satellite service sites in Westminster and Cypress. Grant funding enabled both program sites to pursue licensing to serve 60 frail adults and hire staff fluent in Vietnamese, Korean and Spanish.

Outcomes:

- Established partnerships with city governments and local service providers.
- Identified service delivery sites.
- Cypress facility is scheduled to open in Winter 2003.

Collaborative Partners:

- Boeing Employee Community Fund provided \$10,000.
- Disneyland Community Service Award provided \$10,000.
- Disneyland Employees provided \$5,000.
- XOXO Foundation provided \$10,000.
- Orange County Board of Supervisor Charles V. Smith provided \$6,000.
- PacifiCare Foundation provided \$10,000.



Adult Day Services

Grantee:
Korean Health, Education, Information and Research (KHEIR) Center
Los Angeles, California

Project:
Adult Day Health Care for Korean Elders

Investment:
\$142,000 over two years

The shortage of caregivers calls attention to the need for adequate services for tomorrow's elder.

Description:
In response to an overwhelming need for adult day services, Korean Health, Education, Information, and Research Center opened a second Adult Day Health Care Center for Korean American frail older adults in the Hollywood/Wilshire neighborhoods of Los Angeles. Funding supported equipping the facility with bilingual and bi-cultural staff to serve Korean Americans and others. Program services included medical and nursing services, personal care, counseling, rehabilitation, meals, nutritional education, recreational activities and transportation.

Outcomes:

- Opened a second Adult Day Health Care Center in April 2001.
- Maintained an average daily attendance of 79 since opening.

The United States Administration on Aging reports that there are over 7 million informal caregivers providing the majority of long term care to society's older adults. Of older adults, 65% rely on family caregivers – an annual economic value of \$45-\$95 billion. Supporting today's caregiver with educational resources, caregiving skills, referrals, and respite are critical aids to support families as they care for their elders.

Grantee:
Ventura Alzheimer's Association
Ventura County, California

Project:
Caregiver In-Home Support Project for Latino Elders

Investment:
\$40,689 over one year

Description:
The Caregiver In-Home Support Project for Latino Elders works with informal caregivers of Alzheimer's patients, often spouses or family members. Targeting primarily a mono-lingual Spanish speaking population, the project provides in-home support and case management services.

- Outcomes:*
- Developed a Spanish Caregiver Resource Guide.
 - Supported 78 Alzheimer's patients' caregivers.
 - Provided 333 hours of in-home case management services.
 - Sponsored registration of 10 Alzheimer's patients in the nationwide Safe Return Program.

Collaborative Partners:

- The California Endowment supported the Santa Paula Latino Community Outreach Initiative, a point of referral into the program.



Caregiver Support & Disability Services

Vision loss in later life is commonly caused by macular degeneration, diabetes and glaucoma. Loss of vision can result in limited activities of daily living, which for many older adults may be disabling, and may result in the loss of independence. However, disability in one dimension does not automatically imply disability in another. Archstone Foundation strives to maintain older adults' independence in the community for as long as possible.

Grantee:
Center for the Partially Sighted
Los Angeles, California

Project:
Independent Living Skills Program

Investment:
\$60,000 over one year

Description:
The Independent Living Skills Program supports visually impaired older adults. The program provides individualized rehabilitation training to partially sighted older adults who live independently. An assessment is conducted with each older adult and an individualized rehabilitation program is developed. Each tailored program assists the client with skills development to continue living independently.

- Outcomes:*
- Assessed the independent living skills of 600 partially sighted older adults.
 - Provided individualized rehabilitation to 287 partially sighted older adults.
 - Served 17 clients with a 13-week "Essential Living Skills" class.
 - Instructed 147 partially sighted older adults on spatial orientation and mobility.

Collaborative Partners:

- The California State Department of Rehabilitation provided \$8,000 to support program activities and \$10,000 through Title 7, Chapter 2.
- The Ralph M. Parsons Foundation provided \$25,000 to support program activities.

Of the 35 million older adults in the United States, an estimated 2 million have a depressive illness with another 5 million experiencing depressive symptoms that do not meet the full diagnostic criteria for a psychological disorder (National Institute of Mental Health, 2003). Serious illness is often a precursor to depressive illness, as are homelessness and economic difficulties. As our society ages, comprehensive mental health services will be critical in addressing the psychological needs of our elders.

Grantee:
The Center for Aging Resources
Pasadena, California

Project:
Clinical Mental Health Outreach Project

Investment:
\$270,400 over two years

Description:
The Clinical Mental Health Outreach Project provides comprehensive services to older adults whose psychological impairments threaten their safety, independence, quality of life, and impinge upon their ability to accept needed services. Project staff work within the community to outreach and identify seniors in need. Program participants are screened via a mental health assessment and referred to appropriate services. Individualized treatment plans are developed with the client and monitored by case managers and a psychologist.

Outcomes:

- In year one, provided 252 clients with case management and referrals services.
- In year one, served 246 seniors with clinical mental health services.



Mental Health

Grantee:
Sharp HealthCare Foundation
San Diego, California

Project:
Inner City Mental Health Support and Homelessness Prevention Project

Investment:
\$75,200 over one year

As our society ages, comprehensive mental health services will be critical for the needs of our elders.

Description:
The Inner City Mental Health Support and Homelessness Prevention Project targets at-risk urban seniors residing in San Diego's Downtown Single Room Occupancy (SRO) hotels. Many of these seniors live with untreated mental illness and face homelessness. Using outreach, education and mental health assessments, the project's social worker identifies at-risk seniors and provides case management services. Through partnerships with local SRO hotel staff and social service agencies, the project has established a system of managing seniors in crisis and linking them to needed resources.

Outcomes:

- Provided 224 seniors with case management services and linkages to community resources.
- Screened 302 seniors for depression and anxiety, resulting in referrals to a mental health professional.
- Engaged 21 SRO hotel managers in assisting with the activities of the project.

Collaborative Partners:

- Sharp HealthCare provided \$24,477 to support the project's outreach activities.

As the United States older adult population continues to grow, of deepening concern is our nation's preparedness and ability to provide professionally trained physicians, nurses, social workers, and allied health professionals to meet the anticipated demand in health and social services. As of January 2001, the American Board of Internal Medicine issued certificates of General Internal Medicine to 171,594 physicians. Of those physicians, only 6,690 received added geriatric medicine qualifications, resulting in less than 4% of physicians trained in caring for older adults. Among nurses, the International Longevity Center reports that less than 1% of the 2.56 million registered nurses are certified in geriatrics. The National Association of Social Workers reports that only about 5% of the nation's half a million social workers have specialized in the field of gerontology. Archstone Foundation is committed to building the base of professionals in the field of aging through support of education and training programs.

Grantee:

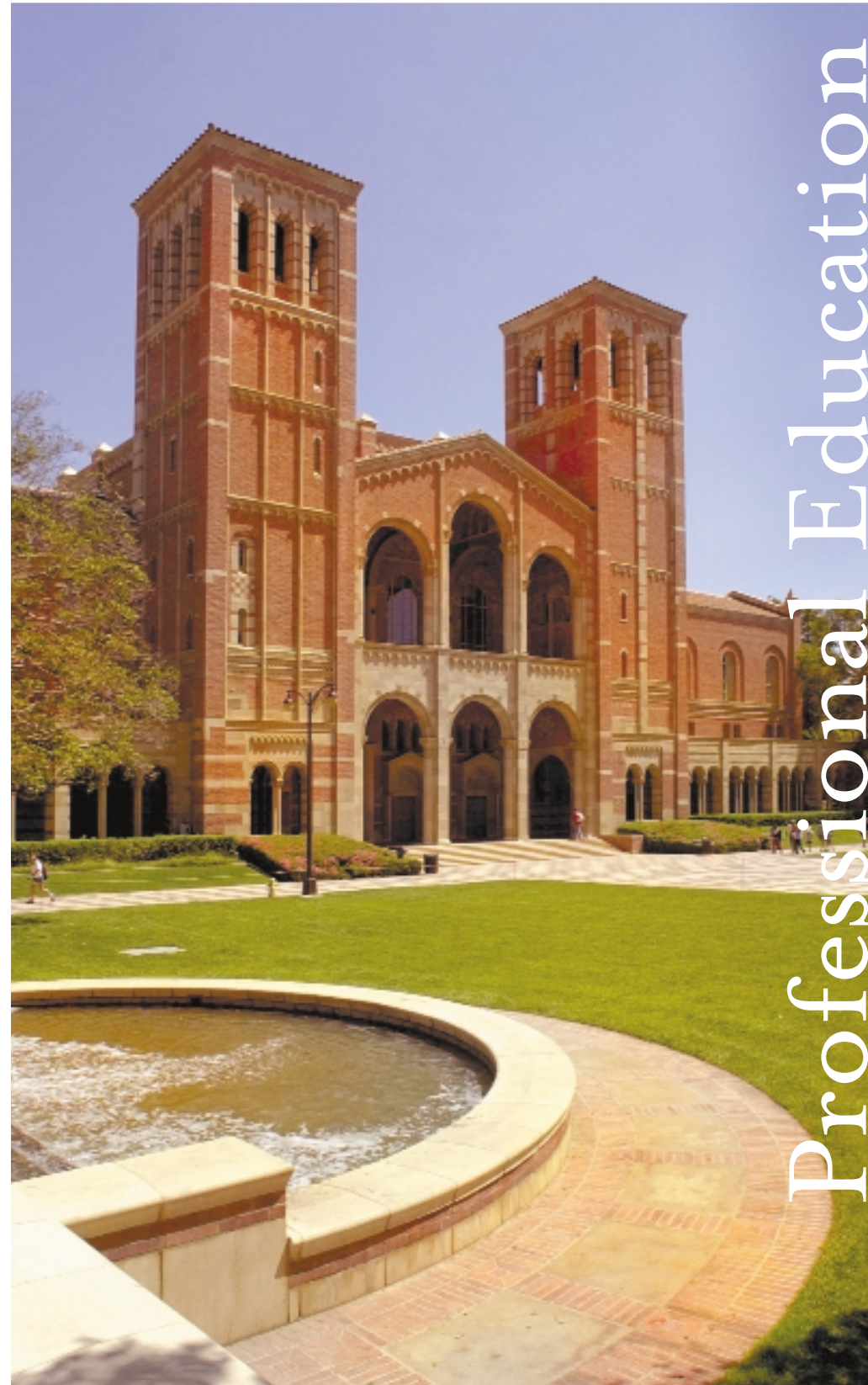
University of California, Los Angeles, School of Medicine
Los Angeles, California

Project:

Archstone Foundation Endowed Chair in Geriatrics

Investment:

\$1,500,000 over three years



Professional Education

Building the base of professionals in the field of aging through support of education and training programs.

Description:

In September 2000 the California Legislature and Governor Gray Davis took a bold step toward improving the care of our elders by enacting AB 1820 which directed the University of California system to "...instill the attitudes, knowledge and skills that physicians need to provide competent and compassionate care for older persons..." The State provided funding for two endowed chairs in geriatric medicine and challenged the University to identify partners to fund chairs at the remaining medical schools. The Archstone Foundation joined this public-private partnership and endowed a chair in geriatric medicine at the University of California, Los Angeles (UCLA). The broader vision of the partnership is to insure that every medical student and all medical residents who will care for adults receive training in geriatric medicine. The focus of the chairs will be on improving training in geriatrics and gerontology throughout the State-supported medical and allied health programs.

Outcomes:

- Support of institutional leadership in the field of Geriatrics.
- Establishment of quality geriatric training for medical students and residents.

Funding Partners:

- \$4 million from the State of California for the Endowed Chairs in Geriatrics at University of California, San Francisco and University of California, Irvine.
- \$2 million from the Larry L. Hillblom Foundation for the Endowed Chair in Geriatrics at University of California, San Diego.
- Two University of California endowments will support Endowed Chairs in Geriatrics at University of California, Davis and University of California, Berkeley.

New Grants Authorized in FY 2002

ACACIA ADULT DAY HEALTH SERVICES
GARDEN GROVE, CA
\$90,000
To expand adult day services into the cities of Cypress and Westminster, California.

ACCESS CENTER OF SAN DIEGO
SAN DIEGO, CA
\$44,640
To support independent living services for seniors with disabilities who reside at home.

ALLIANCE FOR AGING RESEARCH
WASHINGTON, DC
\$112,162
To develop an interactive website to focus on aging research and policy targeting consumers, the media and policy makers.

ALLIANCE ON AGING
MONTEREY, CA
\$36,000
To support free confidential counseling and peer support for seniors who have limited access to mental health services.

ALZHEIMER'S ASSOCIATION, VENTURA COUNTY CHAPTER
CAMARILLO, CA
\$36,620
To develop a resource guide for Latino Alzheimer's patients and their caregivers and provide supportive services.

AMERICAN SOCIETY ON AGING
SAN FRANCISCO, CA
\$10,000
To support professional education programming for senior service practitioners attending the 2002 Joint Conference of the American Society on Aging and the National Council on the Aging.

BAYSIDE COMMUNITY CENTER
SAN DIEGO, CA
\$57,600
To support outreach and wellness services for frail elders in San Diego.

CALIFORNIA COALITION FOR COMPASSIONATE CARE
SACRAMENTO, CA
\$61,214
To support the development of a quality improvement model and Promising Practices, designed to enhance skilled nursing facilities training programs on end-of-life care.

CALIFORNIA MEDICAL ASSOCIATION FOUNDATION
SACRAMENTO, CA
\$15,000
To support a conference on health issues of older women.

CALIFORNIA POOLS OF HOPE, INC.
LONG BEACH, CA
\$13,500
To support free aquatic services for seniors and people with disabilities.

CAREGIVERS - VOLUNTEERS ASSISTING THE ELDERLY
VENTURA, CA
\$18,000
To provide in-home supportive services for homebound frail elders.

CENTER FOR THE PARTIALLY SIGHTED
LOS ANGELES, CA
\$54,000
To support the independent living program that teaches essential living and travel skills to visually impaired older adults.

CITY OF WESTMINSTER
WESTMINSTER, CA
\$13,500
To support intergenerational education activities.

FAMILY SERVICE AGENCY OF SANTA BARBARA
SANTA BARBARA, CA
\$27,000
To provide life-supporting services to underinsured, underserved, low-income elderly to facilitate safe and healthy aging in place.

FAMILY SERVICE OF LONG BEACH
LONG BEACH, CA
\$5,400
To support in-home services for frail seniors in the Long Beach community.

FRIENDS OF ALZHEIMER'S CAREGIVERS
LOS ALAMITOS, CA
\$18,000
To support short-term respite and professional assistance to family members of Alzheimer's patients who have become financially, physically and emotionally depleted as caregivers.

GOLDMAN INSTITUTE ON AGING
SAN FRANCISCO, CA
\$45,000
To expand help-line assistance for older adults in the San Francisco Bay Area who may be depressed, bereaved, lonely, abused, alcoholic, and/or suicidal.

JEWISH COMMUNITY CENTER OF LONG BEACH
LONG BEACH, CA
\$13,500
To support the senior nutrition program.

JEWISH FAMILY AND CHILDREN'S SERVICE
LONG BEACH, CA
\$5,000
To support presentations on the work of JFCS' Older Adult Services staff at the Joint Conference of the American Society on Aging and the National Council on the Aging.

LATINO HEALTH ACCESS
SANTA ANA, CA
\$90,000
To support outreach activities to low-income, high-risk Latino elders in Orange County for referral to existing aging services designed to foster independence and minimize disability.

LIFECARE COMMUNITY SERVICES COUNCIL
SALT LAKE CITY, UT
\$22,500
To support volunteer-based outreach to ameliorate the loneliness and isolation faced by many low-income and frail seniors.

LONG BEACH PUBLIC LIBRARY FOUNDATION
LONG BEACH, CA
\$87,210
To support the delivery and pick-up of library materials to homebound and isolated seniors.

OASIS INSTITUTE
ST. LOUIS, MO
\$57,503
To support intergenerational tutoring and health education activities at the Oasis Center in Lakewood, California.

OREGON DEATH WITH DIGNITY
PORTLAND, OR
\$67,500
To support public education efforts on end-of-life issues.

PERSEPHONE PRODUCTIONS, INC.
WASHINGTON, DC
\$45,000
To support the development of a short documentary on elder abuse, designed to educate policymakers, opinion leaders, and television viewers about strategies for identifying and preventing elder abuse.

SAINT JOSEPH CENTER
VENICE, CA
\$12,600
To expand senior outreach services to elders who are either homeless or homebound.

SAN FRANCISCO ADULT DAY SERVICES NETWORK
SAN FRANCISCO, CA
\$45,000
To support a three-year research project evaluating the effectiveness of adult day services (ADS) and measuring the impact of ADS on the health and functioning of community dwelling, chronically ill and disabled older adults.

SENIOR COMMUNITY CENTERS OF SAN DIEGO
SAN DIEGO, CA
\$58,500
To support access to affordable medical care, social service interventions, and natural support systems.

SHARP HEALTHCARE FOUNDATION
SANTA MONICA, CA
\$67,680
To support the delivery of mental health and homeless services to low-income seniors residing in inner city San Diego, California.

SOUTH COUNTY SENIOR SERVICES,
LAGUNA HILLS, CA
\$45,000
To support regional efforts to establish a continuum of integrated services for seniors, their families and caregivers.

STATE OF HAWAII, OFFICE OF AGING
HONOLULU, HI
\$90,000
To support further development of resources to improve the care of the elderly approaching death by providing materials and training.

STOP-GAP
SANTA ANA, CA
\$24,637
To support the delivery of aging specific theater programs to seniors in Los Angeles and Orange Counties.

THE AMYOTROPHIC LATERAL SCLEROSIS ASSOCIATION
AGOURA HILLS, CA
\$67,500
To support case management services for persons with amyotrophic lateral sclerosis to increase access to health-care and community resources.

THE CENTER FOR AGING RESOURCES
PASADENA, CA
\$121,680
To provide long-term outreach and interventions to psychologically impaired seniors in an effort to promote their safety, independence and/or quality of life, and use of services.

THE HOSPICE FOUNDATION
TORRANCE, CA
\$67,500
To provide education and training on end-of-life issues and palliative care principles to senior life care community residents and staff.

UNIVERSITY OF CALIFORNIA
LOS ANGELES, CA
\$500,000
To establish an Endowed Chair in Geriatrics at the University of California, Los Angeles, School of Medicine.

UNIVERSITY OF CALIFORNIA
LOS ANGELES, CA
\$48,164
To support the development and dissemination of community level data on the health of California elders.

UNIVERSITY OF CALIFORNIA
SAN FRANCISCO, CA
\$28,993
To establish an Active Aging Community Task Force in Los Angeles County.

UPWARD BOUND HOUSE
SANTA MONICA, CA
\$22,500
To support staffing and services at the Intergenerational Center located at the low-income housing project.

VERDUGO HILLS VISITING NURSES ASSOCIATION
GLENDALE, CA
\$45,000
To support in-home hospice services in Los Angeles County.

VILLA ESPERANZA SERVICES
PASADENA, CA
\$45,000
To support outreach and marketing activities to increase the number of participants enrolled in the adult day health care center.

ZEN HOSPICE PROJECT
SAN FRANCISCO, CA
\$45,000
To pilot a one-year program to train end-of-life practitioners in both academic competencies and experiential study to satisfy the need for trained counselors skilled in both practical and spiritual aspects of dying.

Continuing Grants Renewed in FY 2002

ALTAMED HEALTH SERVICES CORPORATION
LOS ANGELES, CA
\$8,600
To support quality assurance management, utilization review, and case management oversight for the PACE program.

ALZHEIMER'S ASSOCIATION
CHICAGO, IL
\$50,000
To support efforts to educate and advocate for appropriate insurance coverage and care for people with Alzheimer's disease.

ALZHEIMER'S ASSOCIATION, SALT LAKE CITY CHAPTER
SALT LAKE CITY, UT
\$2,500
To support professional training to assisted living and nursing home care providers in Utah.

BERKELEY REPERTORY THEATER
BERKELEY, CA
\$9,400
To support the development of optimal accessibility options for the elderly and disabled at Berkeley Repertory Theater's new facility.

CALIFORNIA HEALTH ADVOCATES
SANTA ANA, CA
\$9,790
To support the MedSTAR project, which uses existing, trusted, and effective support networks to provide accurate and up-to-date information and assistance to people on Medicare.

CALIFORNIA STATE UNIVERSITY FULLERTON, CA
\$133,337
To develop a balance and mobility specialist instructor training program for older adults designed to build competency in fall prevention practices.

CALIFORNIA STATE UNIVERSITY
LONG BEACH, CA
\$155,000
To develop and offer management training courses in long-term care.

CAMARILLO HOSPICE
CAMARILLO, CA
\$1,500
To support a comprehensive bereavement counseling program consisting of individual, group, and peer support for seniors and caregivers experiencing difficulty coping with grief.

CANINE COMPANIONS FOR INDEPENDENCE
OCEANSIDE, CA
\$2,500
To support the use of therapeutic dogs at senior living centers.

CAREGIVERS - VOLUNTEERS ASSISTING THE ELDERLY
VENTURA, CA
\$1,500
To support in-home support services for underserved and frail elderly.

CENTER FOR HEALTHY AGING
SANTA MONICA, CA
\$7,680
To develop a manual and interactive educational compact disc for community-based service providers who wish to replicate the "When Mother Calls" workplace caregiver education program.

CENTER FOR THE PARTIALLY SIGHTED
LOS ANGELES, CA
\$6,000
To support the independent living program that taught essential living and travel skills to visually impaired older adults.

CHAPMAN UNIVERSITY SCHOOL OF LAW
ORANGE, CA
\$5,000
To train law students to monitor elder law cases and provided legal aid services to seniors in Orange County.

CITY OF WESTMINSTER
WESTMINSTER, CA
\$1,500
To support intergenerational education activities.

COMMUNITY PARTNERS IN CARING
SANTA MARIA, CA
\$20,500
To develop grief, loss and support services for frail, ill, disabled adults and their caregivers.

FAMILY CAREGIVER ALLIANCE
SAN FRANCISCO, CA
\$234,000
To establish a National Center on Caregiving.

FAMILY SERVICE AGENCY OF SANTA BARBARA
SANTA BARBARA, CA
\$29,000
To support in-home services for low-income frail elderly who live independently.

FAMILY SERVICE ASSOCIATION OF WESTERN RIVERSIDE COUNTY
RIVERSIDE, CA
\$2,500
To support outreach and marketing efforts associated with the adult day health care program.

HEART TOUCH PROJECT
SANTA MONICA, CA
\$19,000
To develop a massage therapy program for the elderly and design workshops to train massage therapists on how to care for frail elders residing in nursing homes.

HOSPICE OF PASADENA
PASADENA, CA
\$1,000
To expand community outreach and hospice services to underserved populations.

HUNTINGTON MEMORIAL HOSPITAL
PASADENA, CA
\$8,371
To develop a comprehensive model of resources, training workshops and support services for caregivers.

JEWISH FAMILY AND CHILDREN'S SERVICE
LONG BEACH, CA
\$6,036
To support elders maintain independence, prevent premature institutionalization and avoid crises by identifying seniors who are at risk and coordinating their services.

KOREAN HEALTH EDUCATION, INFORMATION & REFERRAL CENTER
LOS ANGELES, CA
\$55,013
To establish an adult day health care center and expand services to Korean-American frail elderly and developmentally disabled in Los Angeles County.

LIFELONG MEDICAL CARE
BERKELEY, CA
\$9,212
To develop materials for varying literacy levels to assist older adults with medical forms and explain medications.

LIFECARE COMMUNITY SERVICES COUNCIL
SALT LAKE CITY, UT
\$2,500
To support volunteer-based home repair, transportation and food delivery to frail elders.

LITTLE TOKYO SERVICE CENTER
LOS ANGELES, CA
\$5,900
To support care management services for isolated or homebound Japanese-American seniors.

LONG TERM CARE SERVICES OF VENTURA COUNTY
VENTURA, CA
\$1,500
To support recruitment and training of volunteer long-term care ombudsman.

LOS AMIGOS RESEARCH AND EDUCATION INSTITUTE
DOWNEY, CA
\$7,350
To expand the adult day service program to an adult day health care site at Rancho Los Amigos National Rehabilitation Center.

LOS AMIGOS RESEARCH AND EDUCATION INSTITUTE
DOWNEY, CA
\$97,700
To pilot a three-year program designed to reduce falls in adult day health clients.

LOS ANGELES FREE CLINIC
LOS ANGELES, CA
\$3,230
To support dental and case management services to low-income seniors.

MEMORIAL MEDICAL CENTER FOUNDATION
LONG BEACH, CA
\$11,440
To develop a chronic disease self-management program to improve the lives and health status of patients with chronic illness and reduce associated healthcare costs.

NATIONAL COUNCIL ON THE AGING
WASHINGTON, DC
\$100,000
To develop and launch an interactive website to inform seniors and their caregivers about the public benefits they are eligible for - www.benefitscheckup.org.

NATIONAL PACE ASSOCIATION
SAN FRANCISCO, CA
\$5,000
To develop a survey tool to measure elder satisfaction with quality of care in the Program for All-inclusive Care for the Elderly (PACE).

NATIONAL SENIOR CITIZENS LAW CENTER
LOS ANGELES, CA
\$55,210
To support education and advocacy efforts to improve nursing home care.

OREGON DEATH WITH DIGNITY
PORTLAND, OR
\$5,000
To support public education on palliative and end-of-life care and monitor the implementation of Oregon's Death With Dignity Law.

PARTNERS IN CARE FOUNDATION
BURBANK, CA
\$45,000
To support adult day health services in the cities of Lancaster and Santa Clarita, California.

PARTNERS IN CARE FOUNDATION
BURBANK, CA
\$13,142
To support the implementation of a regionally-based model of comprehensive, integrated field and academic geriatric social work education.

PLAYWRIGHTS PROJECT
SAN DIEGO, CA
\$1,235
To support a grassroots theater effort that draws on the life experiences of older adults and performs at senior care facilities.

PROVIDENCE SAINT JOSEPH FOUNDATION
BURBANK, CA
\$6,500
To expand case management services for low-income elders in the San Fernando Valley.

REBUILDING TOGETHER,
LONG BEACH
LONG BEACH, CA
\$1,500
To support home repairs for elderly and disabled persons living on fixed incomes in Long Beach, California.

RECORDING FOR THE BLIND AND DYSLEXIC
PRINCETON, NJ
\$5,100
To support full and equal access to forms and information regarding advance directives and eldercare for print-disabled elderly Californians.

RIVERSIDE HOSPICE
RIVERSIDE, CA
\$1,000
To support volunteer-based companions for frail seniors in need of assistance.

ROBERT F. KENNEDY MEDICAL CENTER FOUNDATION
HAWTHORNE, CA
\$5,000
To support independent living services for frail elderly residing in their homes.

RURAL ELDERS
WEED, CA
\$60,000
To support educational programs for the professional and lay communities on dementia and health promotion.

SAINT BARNABAS SENIOR CENTER OF LOS ANGELES
LOS ANGELES, CA
\$50,000
To increase the number of seniors served through the expansion of the adult day health care center.

SAINT JOSEPH CENTER
VENICE, CA
\$1,000
To support outreach services to elders who are either homeless or homebound.

SAINT MARY MEDICAL CENTER FOUNDATION
LONG BEACH, CA
\$5,000
To support diabetes outreach and education services for Long Beach's Southeast Asian and Latino communities.

SAINT VINCENT SENIOR CITIZEN NUTRITION PROGRAM
LOS ANGELES, CA
\$3,739
To provide in-home supportive services for frail elders who are homebound.

SAN DIEGO STATE UNIVERSITY
SAN DIEGO, CA
\$2,952
To pilot a functional fitness program designed to improve fitness, prevent osteoporosis and prevent falls in the elderly.

SENIOR COMMUNITY CENTERS OF SAN DIEGO
SAN DIEGO, CA
\$4,500
To support health and harm reduction activities designed to foster access to affordable medical care, social service interventions and natural support systems for low-income elders.

SINGLE ROOM OCCUPANCY HOUSING CORPORATION
LOS ANGELES, CA
\$2,615
To support case management services for seniors residing in Los Angeles' Central City East community.

STATE OF HAWAII EXECUTIVE OFFICE ON AGING
HONOLULU, HI
\$99,904
To support development of resources to improve the care of the elderly approaching death by providing materials and training.

STOP-GAP
SANTA ANA, CA
\$2,438
To support interactive performances of a 3-part series of plays that creatively address issues of aging to seniors in Los Angeles and Orange Counties.

THE HOSPICE FOUNDATION
TORRANCE, CA
\$5,000
To support education and training to residents and staff of a senior life care community on end-of-life issues and palliative care.

TIDES CENTER
SAN FRANCISCO, CA
\$1,250
To support a conference on the 'Environmental Health Consequences of Civil Unrest', which gives particular consideration to the effects of such events on the aged and very young members of society.

UNIVERSITY OF CALIFORNIA BERKELEY, CA
\$4,781
To support research and dissemination of national data on the growing number of grandparents who are providing extensive child care.

UNIVERSITY OF CALIFORNIA IRVINE, CA
\$4,268
To support a national conference on the medical aspects of elder abuse and the roles of healthcare professionals in identifying, examining, documenting, treating, reporting and preventing elder abuse.

UNIVERSITY OF CALIFORNIA IRVINE, CA
\$294,097
To create the Vulnerable Adult Specialist Team (VAST), an interdisciplinary team of trained medical experts in elder and dependent adult abuse.

UNIVERSITY OF CALIFORNIA LOS ANGELES, CA
\$5,706
To support the guided autobiography program designed for use with older adults who are living in assisted living facilities, continuing care facilities or nursing homes.

UNIVERSITY OF SOUTHERN CALIFORNIA
LOS ANGELES, CA
\$196,047
To establish a National Resource Center on Supportive Housing and Home Modifications to make supportive housing and home modification integral components of successful aging, long-term care, preventive health, and elder-friendly communities.

VILLA ESPERANZA SERVICES
PASADENA, CA
\$10,000
To start an adult day health care program.

VISITING NURSE SERVICE OF NEW YORK
NEW YORK, NY
\$29,700
To support the implementation of an elder friendly communities project in Southern California, a model using a set of indicators to identify elder friendly communities that welcome and support individuals who wish to age in place.

VOICES OF HEALING
SAN RAFAEL, CA
\$860
To support the production and distribution of music therapy videos to seniors in skilled nursing facilities.

VOLUNTEERS OF AMERICA OF LOS ANGELES
LOS ANGELES, CA
\$3,000
To replicate Cause for Paws, a volunteer-based program designed to assist frail elders keep their companion animals by matching donated goods and services with elders in need.

WISE SENIOR SERVICES
SANTA MONICA, CA
\$2,000
To pilot a respite program for caregivers to enable the caregivers to prolong care in the home of dependent elders.

YOUNG AT HEART PROJECT
SANTA CRUZ, CA
\$2,000
To replicate the "Young at Heart Project" in Santa Barbara County, which provides volunteer-based musical performances to seniors in assisted living and nursing homes.

YOUNG AT HEART PROJECT
SANTA CRUZ, CA
\$1,500
To support volunteer-based music performances in nursing homes and senior residential facilities.

New Grants Authorized in FY 2003

ALZHEIMER'S ASSOCIATION, LOS ANGELES CHAPTER
LOS ANGELES, CA
\$103,500
To develop a continuum of services to support persons with early stage Alzheimer's disease and their families.

ALZHEIMER'S SERVICES OF THE EAST BAY
BERKELEY, CA
\$45,218
To support a quality of care initiative designed to improve the care provided in Alameda County adult day services (ADS) programs from initial inquiry through discharge, as well as to develop information and tools for use by ADS programs in other areas.

AMERICAN SOCIETY ON AGING SAN FRANCISCO, CA
\$13,459
To support professional education sessions on critical issues on aging at the 2003 Joint Conference of the American Society on Aging and the National Council on the Aging.

ARTS AND SERVICES FOR DISABLED
LONG BEACH, CA
\$1,350
To support a senior volunteer program to assist disabled seniors participating in adult day programs.

FRIENDSHIP ADULT DAY CARE CENTER
SANTA BARBARA, CA
\$9,000
To support an educational program that raises public awareness of the needs of isolated and at-risk seniors residing in the community.

HEALTH CARE COUNCIL OF ORANGE COUNTY
SANTA ANA, CA
\$13,500
To support a county-wide volunteer home visitation program for older adults and persons with disabilities.

JEWISH FAMILY AND CHILDREN'S SERVICE OF LONG BEACH
LONG BEACH, CA
\$3,600
To support the presentation of findings from the Physician Liaison Project at the 2003 Joint Conference of the American Society on Aging and the National Council on the Aging.

JEWISH FAMILY AND CHILDREN'S SERVICE OF LONG BEACH
LONG BEACH, CA
\$13,410
To support fieldwork training of MSW students specializing in gerontology by establishing a Center of Excellence for Geriatric Social Work Education.

LOS ANGELES FREE CLINIC
LOS ANGELES, CA
\$33,300
To support free dental and case management services for low-income seniors.

LOS ANGELES JEWISH HOME FOR THE AGING
RESEDA, CA
\$76,050
To support the development of a hospice program.

NEIGHBOR TO NEIGHBOR: CYCIC PRESCOTT VALLEY, AZ
\$21,240
To support access to health benefits and pharmaceutical prescription drug assistance programs through an information and technology network.

ORANGE COUNTY COUNCIL ON AGING
SANTA ANA, CA
\$24,660

To support the Retiree Response Technical Team, a community-based program designed to investigate financial abuse perpetrated against the elderly and other vulnerable adults.

OREGON DEATH WITH DIGNITY
PORTLAND, OR
\$45,000
To support public education and awareness efforts on Oregon's death with dignity model of end-of-life care.

PASADENA SENIOR CENTER
PASADENA, CA
\$22,500
To support Project 2561 Connect, which links seniors who are 85+ years of age with existing community services.

REBUILDING TOGETHER,
LONG BEACH
LONG BEACH, CA
\$13,500
To support emergency housing repair and assistance for low-income seniors in Long Beach, California.

SAINT JOSEPH CENTER
VENICE, CA
\$12,600
To support services for homeless and homebound seniors.

SAN DIEGO HOSPICE AND PALLIATIVE CARE
SAN DIEGO, CALIFORNIA
\$37,485
To develop a palliative care program for nursing students.

SANTA MONICA COLLEGE FOUNDATION
SANTA MONICA, CA
\$13,500
To support expansion of services for senior stroke survivors.

UNIVERSITY OF CALIFORNIA IRVINE, CA
\$284,756
To establish a regional Elder Abuse Forensic Center to provide comprehensive services to abused and neglected seniors and dependent adults.

UNIVERSITY OF CALIFORNIA LOS ANGELES, CA
\$5,000
To support presentation of Closing the Patient-Provider Communication Gap: Research Applications and Tools for Improving Clinical Care of Older Patients' at the Gerontological Society of America's annual meeting.

UNIVERSITY OF CALIFORNIA LOS ANGELES, CA
\$135,000
To support a statewide convening to develop a blueprint for preventing falls in the elderly.

UNIVERSITY OF CALIFORNIA SAN FRANCISCO, CA
\$74,440
To assess California's long-term care ombudsman programs and develop recommendations for process improvements and effectiveness.

VOLUNTEER CENTER OF RIVERSIDE COUNTY
RIVERSIDE, CA
\$13,500
To support volunteer recruitment and training of long-term care ombudsman.

*Continuing Grants
Renewed in FY 2003*

ACACIA ADULT DAY HEALTH SERVICES
GARDEN GROVE, CA
\$77,500
To expand adult day services into the cities of Cypress and Westminster, California.

ACCESS CENTER OF SAN DIEGO
SAN DIEGO, CA
\$4,960
To support independent living services for seniors with disabilities who reside at home.

ADULT DAY SERVICES OF ORANGE COUNTY
HUNTINGTON BEACH, CA
\$6,300
To support programming for people with early stage Alzheimer's disease.

ALLIANCE FOR AGING RESEARCH
WASHINGTON, DC
\$116,525
To develop an interactive website to focus on aging research and policy targeting consumers, the media and policy makers.

ALLIANCE ON AGING
MONTEREY, CA
\$4,000
To support free confidential counseling and peer support for seniors who have limited access to mental health services.

ALZHEIMER'S ASSOCIATION
CHICAGO, IL
\$5,000
To support efforts to educate and advocate for appropriate insurance coverage and care for people with Alzheimer's disease.

ALZHEIMER'S ASSOCIATION, LOS ANGELES CHAPTER
LOS ANGELES, CA
\$11,633
To develop supportive services and referral networks to assist long distance caregivers of the elderly.

ALZHEIMER'S ASSOCIATION, SAN DIEGO CHAPTER
SAN DIEGO, CA
\$7,500
To develop dementia care guidelines to enhance services for elders with Alzheimer's and related dementias, and their caregivers.

AMERICAN PARKINSON DISEASE ASSOCIATION
LOS ANGELES, CA
\$30,000
To establish an information and referral center to provide medical, educational and supportive resources in Orange County, California.

AMERICAN SOCIETY ON AGING
SAN FRANCISCO, CA
\$10,000
To support a professional education session on 'MindAlert - Mental Fitness for Life' a national resource center of innovative practices to enhance cognitive and mental functioning among older adults.

BAYSIDE COMMUNITY CENTER
SAN DIEGO, CA
\$64,000
To support outreach and wellness services for frail elders in San Diego.

CALIFORNIA POOLS OF HOPE
LONG BEACH, CA
\$1,500
To support free aquatic services for seniors and people with disabilities.

CALIFORNIA STATE UNIVERSITY FULLERTON, CA
\$88,040
To develop a balance and mobility specialist instructor training program for older adults designed to build competency in fall prevention practices.

CALIFORNIA STATE UNIVERSITY LONG BEACH, CA
\$5,900
To establish a Senior University Computer Learning Center at California State University, Long Beach.

CALIFORNIA STATE UNIVERSITY LONG BEACH, CA
\$4,930
To increase the number of underserved seniors enrolled in the Senior University Computer Center's courses and assure long-term sustainability of the Center.

CALIFORNIA STATE UNIVERSITY LONG BEACH, CA
\$155,000
To develop and offer management training courses in long-term care.

CAREGIVERS - VOLUNTEERS ASSISTING THE ELDERLY
VENTURA, CA
\$2,000
To provide in-home supportive services for homebound frail elders.

CASA COLINA CENTERS FOR REHABILITATION FOUNDATION
POMONA, CA
\$7,500
To pilot a geriatric intervention to prevent functional decline, acute illness, and injury among persons with intellectual and/or developmental disability.

CATHOLIC CHARITIES
LOS ANGELES, CA
\$3,000
To support case management services to the frail elderly.

CITY OF LONG BEACH
LONG BEACH, CA
\$10,000
To support community-based early identification of at-risk seniors and referral to resources that promote independent living.

CITY OF WESTMINSTER
WESTMINSTER, CA
\$1,500
To support intergenerational education activities.

COMMUNITY CARE UKIAH, CA
\$2,870
To develop a senior life planning team of a geriatric nurse, an elder law attorney, and a social worker to assist families with rural elders in transition.

COMMUNITY PARTNERS IN CARING
SANTA MARIA, CA
\$15,500
To develop grief, loss and support services for frail, ill, disabled adults and their caregivers.

DIDI HIRSCH COMMUNITY MENTAL HEALTH CENTER
CULVER CITY, CA
\$1,500
To provide scholarships to low-income seniors with Alzheimer's or mental illness to participate in adult day services and provide supportive services to caregivers.

ELDERHELP OF SAN DIEGO
SAN DIEGO, CA
\$3,500
To develop an outreach project that will provide supportive services, education and referral for adult children caring for their aging parents.

FAMILY CAREGIVER ALLIANCE
SAN FRANCISCO, CA
\$260,000
To establish a National Center on Caregiving.

FAMILY SERVICE AGENCY OF SANTA BARBARA
SANTA BARBARA, CA
\$3,000
To provide life-supporting services to underinsured, underserved, low-income elderly to facilitate safe and healthy aging in place.

FAMILY SERVICE OF LONG BEACH
LONG BEACH, CA
\$6,000
To support in-home services for frail seniors who live in the community.

FRIENDS OF ALZHEIMER'S CAREGIVERS
LOS ALAMITOS, CA
\$20,000
To support short-term respite and professional assistance to family members of Alzheimer's patients who have become financially, physically and emotionally depleted as caregivers.

FRIENDSHIP ADULT DAY CARE CENTER
SANTA BARBARA, CA
\$9,000
To support an educational program that raises public awareness of the needs of isolated and at-risk seniors residing in the community.

GOLDMAN INSTITUTE ON AGING
SAN FRANCISCO, CA
\$5,000
To expand help-line assistance for older adults in the San Francisco Bay Area who may be depressed, bereaved, lonely, abused, alcoholic, and/or suicidal.

HEART TOUCH PROJECT
SANTA MONICA, CA
\$20,000
To develop a massage therapy program for the elderly and design workshops to train massage therapists on how to care for frail elders residing in nursing homes.

INTERNATIONAL CITY THEATRE
LONG BEACH, CA
\$7,237
To support outreach activities to low-income seniors in the greater Long Beach community.

IRVINE ADULT DAY HEALTH SERVICES
IRVINE, CA
\$1,248
To expand occupational and physical therapy services to adult day health program participants.

JEWISH COMMUNITY CENTER OF LONG BEACH
LONG BEACH, CA
\$1,500
To support the senior nutrition program.

KOREAN HEALTH EDUCATION, INFORMATION & REFERRAL CENTER
LOS ANGELES, CA
\$14,569
To establish an adult day health care center and expand services to Korean-American frail elderly and developmentally disabled in Los Angeles County.

LIFE STEPS FOUNDATION
LOS ANGELES, CA
\$12,550
To support the start-up of the San Luis Obispo Wisdom Center, an Adult Day Health Care program.

LIFECARE COMMUNITY SERVICES COUNCIL
SALT LAKE CITY, UT
\$2,500
To support volunteer-based outreach to ameliorate the loneliness and isolation faced by many low-income and frail seniors.

LOS AMIGOS RESEARCH AND EDUCATION INSTITUTE
DOWNEY, CA
\$97,700
To pilot a three-year program designed to reduce falls in adult day health clients at the Rancho Los Amigos National Rehabilitation Center.

NATIONAL COUNCIL ON THE AGING
WASHINGTON, DC
\$100,000
To develop and launch an interactive website to inform seniors and their caregivers about the public benefits they are eligible for - www.benefitscheckup.org

OLIVE VIEW-UCLA MEDICAL CENTER FOUNDATION
SYLMAR, CA
\$1,760
To support health education among Spanish speaking patients with arthritis in California's San Fernando Valley.

OREGON DEATH WITH DIGNITY
PORTLAND, OR
\$7,500
To support public education efforts on end-of-life issues.

PARTNERS IN CARE FOUNDATION
BURBANK, CA
\$15,000
To support adult day health services in the cities of Lancaster and Santa Clarita, California.

PARTNERS IN CARE FOUNDATION
BURBANK, CA
\$149,461
To support the implementation of a regionally-based model of comprehensive, integrated field and academic geriatric social work education.

PERSEPHONE PRODUCTIONS
WASHINGTON, DC
\$5,000
To support the development of a short documentary on elder abuse, designed to educate policymakers, opinion leaders, and television viewers about strategies for identifying and preventing elder abuse.

PROVIDENCE SPEECH AND HEARING CENTER
ORANGE, CA
\$2,500
To support hearing assessments and fitting of hearing aids to low-income seniors.

RECORDING FOR THE BLIND AND DYSLEXIC
PRINCETON, NJ
\$4,900
To support full and equal access to forms and information regarding advance directives and eldercare for print-disabled elderly Californians.

RURAL ELDERS, INC.
WEED, CA
\$6,000
To support educational programs for the professional and lay communities on dementia and health promotion.

SAINT BARNABAS SENIOR CENTER OF LOS ANGELES
LOS ANGELES, CA
\$50,000
To increase the number of seniors served through the expansion of the adult day health care center.

SAINT JOSEPH CENTER
VENICE, CA
\$1,400
To expand senior outreach services to elders who are either homeless or homebound.

SENIOR COMMUNITY CENTERS OF SAN DIEGO
SAN DIEGO, CA
\$6,500
To support access to affordable medical care, social service interventions, and natural support systems.

SENIOR MEALS AND SERVICES
GARDEN GROVE, CA
\$80,844
To support case management services to frail elderly.

SOUTH COUNTY SENIOR SERVICES
LAGUNA HILLS, CA
\$50,000
To support regional efforts to establish a continuum of integrated services for seniors, their families and caregivers.

SOUTHEAST AREA SOCIAL SERVICES FUNDING AUTHORITY
WHITTIER, CA
\$5,860
To support medication management services for homebound seniors.

STANFORD UNIVERSITY
PALO ALTO, CA
\$12,643
To pilot internet-based chronic disease self management patient education program.

STOP-GAP
SANTA ANA, CA
\$2,737
To support the delivery of aging specific theater programs to seniors in Los Angeles and Orange Counties.

THE AMYOTROPHIC LATERAL SCLEROSIS ASSOCIATION
AGOURA HILLS, CA
\$7,500
To support case management services for persons with amyotrophic lateral sclerosis to increase access to health-care and community resources.

THE CENTER FOR AGING RESOURCES
PASADENA, CA
\$134,890
To provide long-term outreach and interventions to psychologically impaired seniors in an effort to promote their safety, independence and/or quality of life, and use of services.

THE HOSPICE FOUNDATION
TORRANCE, CA
\$7,500
To provide education and training on end-of-life issues and palliative care principles to senior life care community residents and staff.

UNIVERSITY OF CALIFORNIA IRVINE, CA
\$66,223
To create the Vulnerable Adult Specialist Team (VAST), an interdisciplinary team of trained medical experts in elder and dependent adult abuse.

UNIVERSITY OF CALIFORNIA LOS ANGELES, CA
\$500,000
To establish an Endowed Chair in Geriatrics at the University of California, Los Angeles, School of Medicine.

UNIVERSITY OF CALIFORNIA SAN FRANCISCO, CA
\$29,444
To establish an Active Aging Community Task Force in Los Angeles County.

UNIVERSITY OF SOUTHERN CALIFORNIA
LOS ANGELES, CA
\$254,031
To establish a National Resource Center on Supportive Housing and Home Modifications to make supportive housing and home modification integral components of successful aging, long-term care, preventive health, and elder-friendly communities.

UPWARD BOUND HOUSE
SANTA MONICA, CA
\$2,500
To support staffing and services at the Intergenerational Center located at the low-income housing project.

VERDUGO HILLS VISITING NURSES ASSOCIATION
GLENDALE, CA
\$5,000
To support in-home hospice services in Los Angeles County.

VILLA ESPERANZA SERVICES
PASADENA, CA
\$5,000
To start an adult day health care program.

VISITING NURSE SERVICE OF NEW YORK
NEW YORK, NY
\$6,700
To support the implementation of an elder friendly communities project in Southern California, a model using a set of indicators to identify elder friendly communities that welcome and support individuals who wish to age in place.

VOLUNTEERS OF AMERICA
LONG BEACH, CA
\$3,500
To support nutrition services to Cambodian elders in Long Beach, California.

YWCA OF SAN GABRIEL VALLEY
WEST COVINA, CA
\$5,000
To expand case management services for San Gabriel Valley seniors in need of in-home assessment and support services.

Windes & McClaughry
 Landmark Square
 111 West Ocean Boulevard
 Twenty-Second Floor
 Long Beach, CA 90802

To the Board of Directors of
 Archstone Foundation

We have audited the accompanying statement of financial position of Archstone Foundation (a non-profit California corporation) as of June 30, 2003 and 2002, and the related statements of activities, and cash flows for the years then ended. These financial statements are the responsibility of the Foundation's management. Our responsibility is to express an opinion on these financial statements based on our audits. The financial statements of Archstone Foundation as of June 30, 2001, were audited by other auditors whose report dated August 10, 2001, expressed an unqualified opinion on those statements.

We conducted our audits in accordance with auditing standards generally accepted in the United States of America. Those standards require that we plan and perform the audit to obtain reasonable assurance about whether the financial statements are free of material misstatement. An audit includes examining, on a test basis, evidence supporting the amounts and disclosures in the financial statements. An audit also includes assessing the accounting principles used and significant estimates made by management, as well as evaluating the overall financial statement presentation. We believe that our audits provide a reasonable basis for our opinion.

In our opinion, the 2003 and 2002 financial statements referred to above present fairly, in all material respects, the financial position of Archstone Foundation as of June 30, 2003 and 2002, and the changes in its net assets and its cash flows for the years then ended in conformity with accounting principles generally accepted in the United States of America.



Long Beach, California
 August 6, 2003

STATEMENT OF FINANCIAL POSITION

	ASSETS		
	June 30,		
	<u>2003</u>	<u>2002</u>	<u>2001</u>
CURRENT ASSETS			
Cash and cash equivalents	\$ 63,512	\$ 27,511	\$ 16,649
Investments, at fair value	102,765,735	105,700,111	122,010,321
Prepaid excise taxes	27,599	33,978	
Other assets	<u>5,681</u>	<u>5,681</u>	<u>129,967</u>
	<u>102,862,527</u>	<u>105,767,281</u>	<u>122,156,937</u>
PROPERTY AND EQUIPMENT, NET	<u>26,702</u>	<u>35,537</u>	<u>41,938</u>
TOTAL ASSETS	<u>\$ 102,889,229</u>	<u>\$ 105,802,818</u>	<u>\$ 122,198,875</u>
LIABILITIES AND UNRESTRICTED NET ASSETS			
CURRENT LIABILITIES			
Accounts payable	\$ 2,791	\$ 16,793	\$ 36,233
Accrued expenses	14,281		
Grants payable	2,413,191	4,228,195	3,902,793
Deferred compensation	<u>100,145</u>	<u>75,190</u>	<u>61,950</u>
	<u>2,530,408</u>	<u>4,320,178</u>	<u>4,000,976</u>
UNRESTRICTED NET ASSETS	<u>100,358,821</u>	<u>101,482,640</u>	<u>118,197,899</u>
TOTAL LIABILITIES AND UNRESTRICTED NET ASSETS	<u>\$ 102,889,229</u>	<u>\$ 105,802,818</u>	<u>\$ 122,198,875</u>

STATEMENT OF ACTIVITIES

	For the Year Ended June 30,		
	<u>2003</u>	<u>2002</u>	<u>2001</u>
REVENUE AND SUPPORT			
Investment income	\$ 2,453,558	\$ 2,602,199	\$ 3,142,134
EXPENSES			
Program expense	1,910,820	4,409,268	4,994,568
Management and general	<u>1,199,109</u>	<u>1,295,636</u>	<u>1,304,087</u>
	<u>3,109,929</u>	<u>5,704,904</u>	<u>6,298,655</u>
CHANGE IN UNRESTRICTED NET ASSETS BEFORE REALIZED AND UNREALIZED NET LOSS ON INVESTMENTS	(656,371)	(3,102,705)	(3,156,521)
REALIZED AND UNREALIZED NET LOSS ON INVESTMENTS	<u>(467,448)</u>	<u>(13,612,554)</u>	<u>(17,116,900)</u>
CHANGE IN UNRESTRICTED NET ASSETS	(1,123,819)	(16,715,259)	(20,273,421)
UNRESTRICTED NET ASSETS AT BEGINNING OF YEAR	<u>101,482,640</u>	<u>118,197,899</u>	<u>138,471,320</u>
UNRESTRICTED NET ASSETS AT END OF YEAR	<u>\$ 100,358,821</u>	<u>\$ 101,482,640</u>	<u>\$ 118,197,899</u>

STATEMENT OF CASH FLOWS

	For the Year Ended June 30,		
	2003	2002	2001
Cash Flows From Operating Activities			
Change in unrestricted net assets	(\$ 1,123,819)	(\$ 16,715,259)	(\$ 20,273,421)
Adjustments to reconcile change in unrestricted net assets to net cash used in operating activities:			
Depreciation and amortization	14,636	21,066	19,355
Realized and unrealized net loss on investments	467,448	13,612,554	17,116,900
(Increase) decrease in:			
Prepaid excise taxes	6,379	(33,978)	
Other assets		124,286	(102,819)
Increase (decrease) in:			
Grants payable	(1,815,004)	325,402	(528,796)
Accounts payable, accrued expenses, and deferred compensation	25,234	(6,200)	(17)
Net Cash Used In Operating Activities	(2,425,126)	(2,672,129)	(3,768,798)
Cash Flows From Investing Activities			
Purchase of investments	(6,448,073)	(11,492,130)	(15,781,365)
Proceeds from sale of investments	8,915,001	14,189,786	19,494,122
Purchase of equipment	(5,801)	(14,665)	(20,758)
Net Cash Provided By Investing Activities	2,461,127	2,682,991	3,691,999
Net change in cash and cash equivalents	36,001	10,862	(76,799)
Cash and cash equivalents at beginning of year	27,511	16,649	93,448
Cash and cash equivalents at end of year	\$ 63,512	\$ 27,511	\$ 16,649

NOTE 1 – Summary of Significant Accounting Policies

Nature of Business

Archstone Foundation (the Foundation) was established on September 20, 1985 to support charitable community activities in the areas of health and health care delivery. On July 1, 1999, the Foundation changed its tax status from a public charity to a private foundation.

The primary source of funding for the Foundation's charitable activities is investment income generated from its investment portfolio.

Use of Estimates

The preparation of the financial statements in conformity with accounting principles generally accepted in the United States of America requires management to make estimates and assumptions that affect certain reported amounts and disclosures. Accordingly, actual results could differ from those estimates.

Cash and Cash Equivalents

Cash and cash equivalents include cash held in checking accounts and all highly liquid investments with original maturities of three months or less.

Investments

Investments in equity securities with readily determinable fair values and all investments in debt securities are measured at fair value in the statement of financial position. Investment income or loss is included in revenue and support. Realized and unrealized gains and losses on investments are reported as a separate component of the change in unrestricted net assets.

Property and Equipment

Property and equipment is stated at cost. Depreciation and amortization is provided on the straight-line method over the estimated useful lives of the assets, which range from two to five years.

Grants Payable

The Foundation reports grants payable at the date the grant is approved by the Board of Directors. Grants payable to be paid in future years are discounted using a risk-free rate applicable at the end of the fiscal year.

Fair Value of Financial Instruments

Investments and grants payable are reported at fair value. The carrying amount of cash, other assets and accounts payable approximates fair value because of the relatively short-term nature of these financial instruments.

Income Taxes

The Foundation is exempt from federal income tax under Section 501(c)(3) of the Internal Revenue Code and the corresponding provisions of the California Revenue and Taxation Code. Accordingly, no provision for taxes based on income has been included in the accompanying financial statements.

Excise Taxes

The Internal Revenue Code imposes an excise tax on Section 501(c)(3) private foundations at the rate of 2% on the net investment income, which is paid by the Foundation in quarterly estimated installments. A reduced rate of 1% will apply if distributions from the Foundation exceed a certain required payout level based on a formula provided under the Internal Revenue Code. Excise tax expense was approximately \$50,500, \$52,000 and \$63,000 for the years ended June 30, 2003, 2002 and 2001, respectively.

NOTES TO THE FINANCIAL STATEMENTS -CONTINUED

NOTE 2 – Investments

The composition of investments, stated at fair value, is as follows:

	June 30,		
	2003	2002	2001
Equity mutual funds	\$ 80,899,747	\$ 80,792,440	\$ 91,540,837
Corporate obligations	21,865,988	24,907,671	30,469,484
	<u>\$ 102,765,735</u>	<u>\$ 105,700,111</u>	<u>\$ 122,010,321</u>

The composition of investment return for cash and cash equivalents and investments is as follows:

	For the Year Ended June 30,		
	2003	2002	2001
Interest and dividend income	\$ 2,453,558	\$ 2,602,199	\$ 3,142,134
Net realized gains (losses) on sale of investments	(10,666)	(280,393)	957,532
Net unrealized losses on investments	(456,782)	(13,332,161)	(18,074,432)
	(467,448)	(13,612,554)	(17,116,900)
	<u>\$ 1,986,110</u>	<u>(\$ 11,010,355)</u>	<u>(\$ 13,974,766)</u>

NOTE 3 – Property and Equipment

A summary of property and equipment is as follows:

	June 30,		
	2003	2002	2001
Leasehold improvements	\$ 163,687	\$ 200,650	\$ 194,812
Furniture and fixtures	12,226	12,226	12,226
	175,913	212,876	207,038
Less: accumulated depreciation and amortization	149,211	177,339	165,100
	<u>\$ 26,702</u>	<u>\$ 35,537</u>	<u>\$ 41,938</u>

NOTE 4 – Grants Payable

At June 30, 2003, the Foundation had outstanding grants payable expected to be paid as follows:

Year Ending June 30.	
2004	\$ 2,068,069
2005	398,972
2006	24,834
	2,491,875
Less: discount	78,684
Present value of grants payable	<u>\$ 2,413,191</u>

Grants payable were discounted using a risk-free rate applicable at the end of the fiscal year (1.93% at June 30, 2003).

NOTES TO THE FINANCIAL STATEMENTS -CONTINUED

NOTE 5 – Employee Benefit Plans

Defined Contribution Plan

The Foundation maintains a 403(b) defined contribution plan for all employees with at least one year of service. The Foundation matches employee contributions up to 15% of a participant's total annual compensation. The Foundation contributed approximately \$16,000, \$17,000 and \$19,000 for the years ended June 30, 2003, 2002 and 2001, respectively.

Deferred Compensation Plan

The Foundation has a deferred compensation plan covering key executives whose annual compensation exceeds \$60,000 per year and whose participation in the plan is approved by the Board of Directors. Participants are 100% vested in the plan at all times. The Foundation makes annual contributions of 10% of each member's annual salary up to an annual threshold of \$12,000, \$11,000 and \$8,500 per employee for calendar years ending 2003, 2002 and 2001, respectively. Contributions to the plan were approximately \$23,000, \$19,000 and \$13,000 for the years ended June 30, 2003, 2002 and 2001, respectively.

NOTE 6 – Lease Agreement

The Foundation entered into a five-year operating lease agreement in February 2002 for office space. Monthly payments under the lease arrangement will be approximately \$7,000-\$8,000 per month.

Rent expense totaled approximately \$87,000, \$84,000 and \$81,000 for the years ended June 30, 2003, 2002 and 2001, respectively.

Future minimum rental payments under the agreement are as follows:

Year Ending June 30.	
2004	\$ 87,072
2005	92,061
2006	95,008
2007	97,729
2008	8,163
	<u>\$ 380,033</u>

Resources:

ACACIA ADULT DAY SERVICES
Mallory Vega
Executive Director
11391 Acacia Parkway
Garden Grove, CA 92640
Phone: (714) 530-1566
www.acacia-services.org

CENTER FOR THE PARTIALLY SIGHTED
LaDonna S. Ringerling, Ph.D.
Executive Director
Center for the Partially Sighted
12301 Wilshire Boulevard, # 600
Los Angeles, CA 90025
Phone: (310) 458-3501
www.low-vision.org

K.H.E.I.R
Laura Jeon
Executive Director
3727 West 6th Street, Suite 410
Los Angeles, CA 90020
Phone: (213) 427-4000
www.koreanhealth.org

LATINO HEALTH ACCESS
America Bracho, M.P.H., C.D.E.
President & CEO
17171 North Broadway
Santa Ana, CA 92706
Phone: (714) 542-7792
www.latinohalthaccess.org

LOS ANGELES FREE CLINIC
Abbe Land & Jeffrey Bujer
Co- CEOs
8405 Beverly Boulevard
Los Angeles, CA 90048
Phone: (323) 330-1650
www.lafreeclinic.org

SAN DIEGO HOSPICE
Jan Cetti
President & CEO
4311 Third Avenue
San Diego, CA 92103
Phone: (619) 688-1600
www.sdhospice.org

SHARP HEALTHCARE FOUNDATION
Sylvia A. Salas, M.P.H.
Senior Grants Officer
8695 Spectrum Center Boulevard
San Diego, CA 92123
Phone: (858) 499-4800
www.sharp.com/foundation

THE CENTER FOR AGING RESOURCES
Cynthia Jackson, Ph.D.
Executive Director
477 North El Molino Avenue
Pasadena, CA 91101
Phone: (626) 577-8480
www.centerforagingresources.org

UNIVERSITY OF CALIFORNIA, IRVINE
Laura Mosqueda, M.D.
Director
Elder Abuse Forensic Center
P.O. Box 22006
Santa Ana, CA 92702
Phone: (714) 825-3087
www.elderabuseforensiccenter.com

UNIVERSITY OF CALIFORNIA, LOS ANGELES
Fall Prevention Conference
Janet C. Frank, Dr.P.H.
Director,
California Geriatric Education Center,
University of California,
School of Medicine
10945 Le Conte, Suite #2339
Los Angeles, CA 90095
Phone: (312) 312-0531
www.geronet.ucla.edu/centers/cgec/home.html

UNIVERSITY OF CALIFORNIA
Endowed Chair
Cathryn L. Nation, M.D.
Director,
Academic Health Sciences
Office of the Vice-President – Health
Affairs
University of California, Office of the
President
1111 Franklin Street, 11th Floor
Oakland, CA 9460-5200
Phone: (510) 987-9705

VENTURA ALZHEIMER'S ASSOCIATION
Sue Tatangelo
Chief Operating Officer
1339 Del Norte Road
Camarillo, CA 93010
Phone: (805) 485-5597
www.centralcoastalz.org

Credits & References

Credits:

ART DIRECTION:
Gabrielle Anderson
Julie Kimura
California State University, Long
Beach, Graphic Design Workshop

PHOTOGRAPHY:
John Robinson Photography

References:

BENSON J.M. (1999)
The Polls--Trends: End of Life Issues.
Public Opinion Quarterly 63, 263-277.

US CENSUS BUREAU (2000)
Population Division. Retrieved
(June 2003) from www.census.gov.

ROBERT WOOD JOHNSON FOUNDATION (1996)
Chronic Care in America:
A 21st Century Challenge

NATIONAL INSTITUTE OF MENTAL HEALTH (2003)
Older Adults: Depression and Suicide Facts.
Retrieved (June 2003) from
http://www.nimh.nih.gov/publicat/elderlydepsui-
cide.cfm.z

Archstone Foundation directs its grant-making activities toward the preparation of society in meeting the needs of an aging population. Currently the majority of the foundation's resources are allocated to programs that address elder abuse prevention, fall prevention among the elderly, end-of-life issues, and emerging needs within the field of aging. Proposals are accepted throughout the year, with quarterly funding decisions made by the Board of Directors.

Application Procedure for Unsolicited Proposals

Unsolicited proposals are accepted on an on-going basis. Initial contact with the Foundation should be in the form of a short proposal, no more than 8 pages, which should include:

- Contact information and a descriptive project title;
- Brief executive summary;
- Background on the issue or need to be addressed;
- Background of the organization and its capacity to undertake the work;
- A project description, including the goals, objectives, timeline and specific activities to be funded;
- A plan for evaluation and the anticipated outcomes of the project;
- A plan for continuance or self-sufficiency for the project upon the completion of the proposed grant (*if appropriate*); and
- Detailed line-item budget for the proposed activities, as well as the overall project. Multi-year grants should include annual budgets. Please round requests to the nearest hundred.

In addition, the following should be included with the submission of the proposal:

- Most recent IRS determination letter showing the 501(c)(3) status;
- Copy of the most recent IRS Form 990;
- Copy of the applicant's most recent financial audit; and
- An electronic copy of the proposal on diskette, readable in Microsoft Word or Word Perfect.

Faxed or E-mailed proposals will not be accepted.

Review Process

The review process is completed once a quarter and generally requires four months from receipt of the proposal to funding. An initial review is made by staff at which time additional information may be requested. Proposals meeting the guidelines and focus of the Foundation are then reviewed by a Proposal Review Committee, which meets once a quarter. This committee will then refer a slate of proposals to the Board of Directors for consideration. The Board meets quarterly to make funding decisions. The Foundation will also periodically issue Requests for Proposals (RFP) on specific topics. These RFPs have a separate review process and timeline.

Geographic Focus

In recognition of the source of the Foundation's endowment, priority is given to proposals serving the Southern California region. Proposals from outside Southern California may be considered if they serve the state as a whole, are demonstration projects with potential for replication in California, or have a regional or national impact. Projects that have the potential to improve practice in the field may also be considered.

Exclusions

The Foundation will not consider support of:

- Organizations without a 501(c)(3) designation or individuals (although some government-sponsored projects may be considered);
- Biomedical research;
- Capital expenditures, "bricks and mortar" or building campaigns; and
- Endowments or fundraising events.

Proposals should be directed to:

Mary Ellen Courtright, M.P.H.
Vice President and Program Officer
Archstone Foundation
401 E. Ocean Blvd., Suite 1000
Long Beach, CA 90802
Telephone: (562) 590-8655
Facsimile: (562) 495-0317
E-mail: archstone@archstone.org