

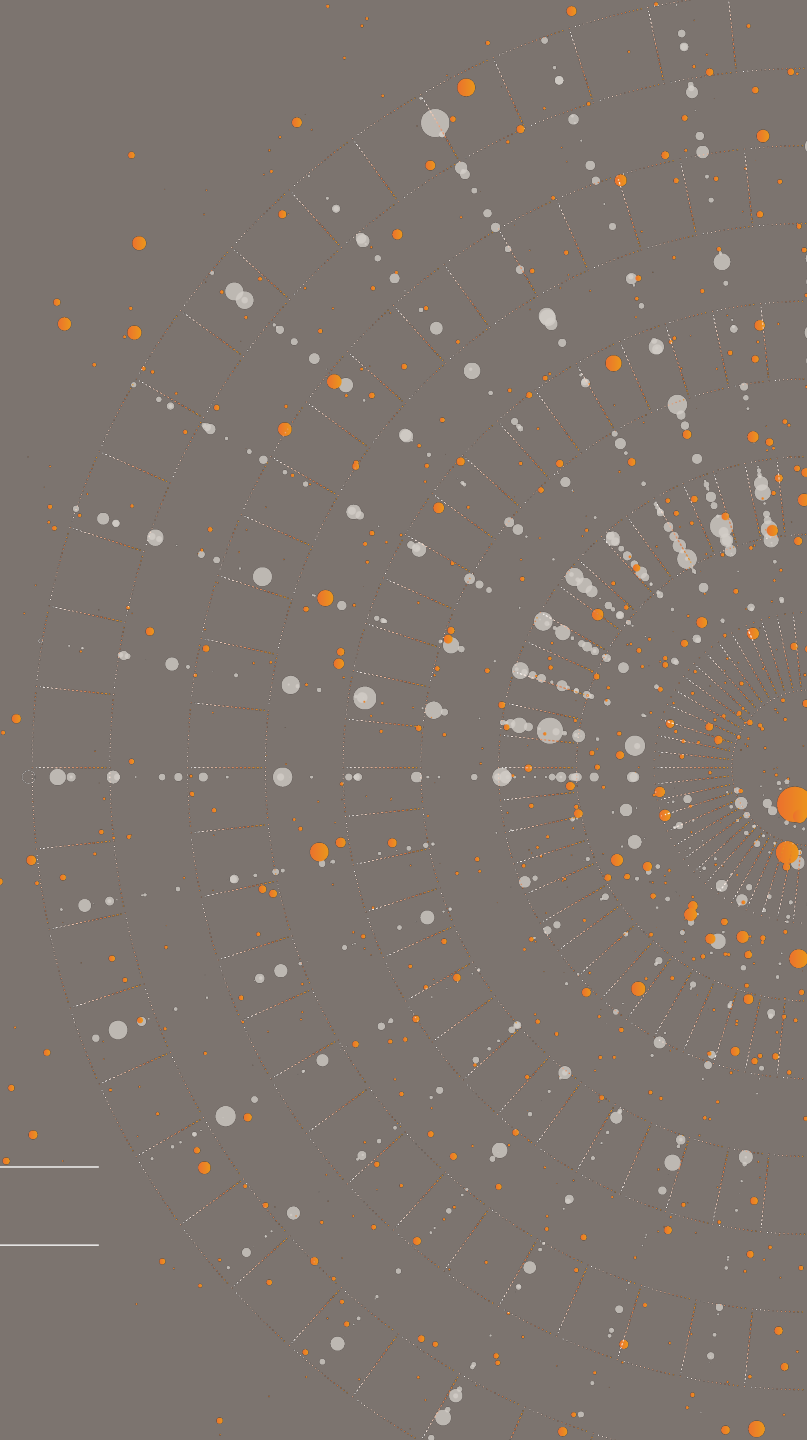
# Understanding Economic Impacts of Immigration Policy Enforcement on Aging & Long-Term Care Sectors in California

---

11.13.2025

---


Shri Parashuram





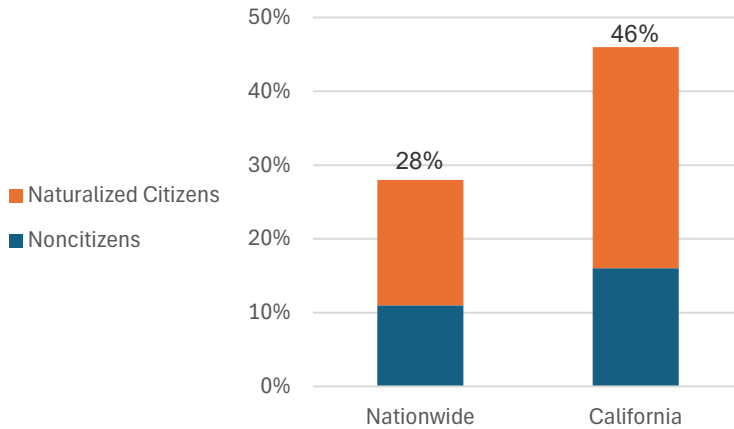
 **NORC** at the  
University of  
Chicago

NORC at the University of Chicago brings a nonpartisan, transparent, data-driven approach to understanding how policy impacts people

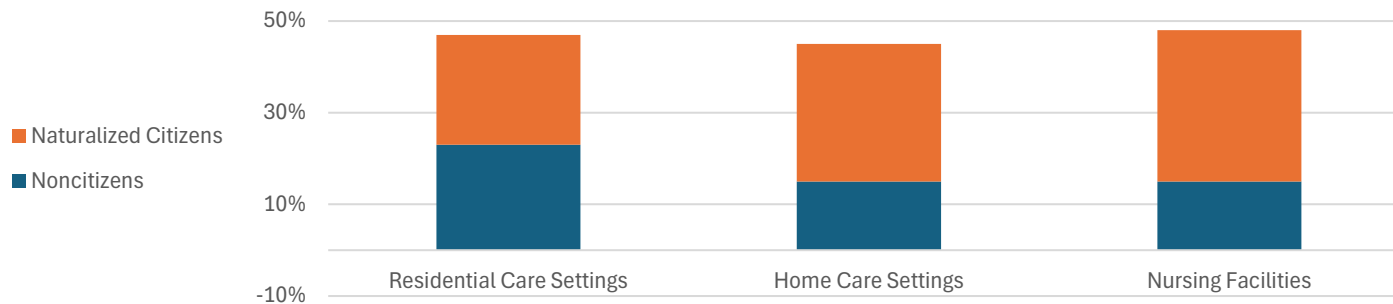
 Research You Can Trust™

# Immigrant Workforce in Aging and Long-Term Care (LTC)

## Immigrants Key to Stability of Direct LTC Workforce Nationwide and Even More In California<sup>1,2,3</sup>



## Economic Impacts of Immigration Policy Enforcement Expected in California Across Aging and LTC Settings<sup>3</sup>



## California also has greater proportion of immigrant hospital workers relative to the nation<sup>4</sup>

References:

- Chidambaram, P. & Pillai, D. (2025). What Role Do Immigrants Play in The Direct Long-Term Care Workforce? KFF. <https://www.kff.org/medicaid/what-role-do-immigrants-play-in-the-direct-long-term-care-workforce/>
- Rapp, T., & Sicsic, J. (2020). The contribution of the immigrant population to the U.S. long-term care workforce. *Social Science & Medicine*, 263, 113305. <https://doi.org/10.1016/j.socscimed.2020.113305>
- U.S. Census Bureau. (2024). American Community Survey 1-year estimates, 2023 [Data set]. U.S. Department of Commerce. <https://www.census.gov/programs-surveys/acs>
- Hulver, S., Levinson, Z., & Pillai, D. (2025). What Role Do Immigrants Play in the Hospital Workforce? KFF. <https://www.kff.org/racial-equity-and-health-policy/what-role-do-immigrants-play-in-the-hospital-workforce/>

# Theory of Action: How Immigration Policy Enforcement Exacerbates Workforce & Caregiver Shortages

## Impact on Workforce Availability

- Reductions in available LTC workers and direct care staff hours per resident.<sup>1,2</sup>
- Reductions in medical care workers.

## Caregiver Shortage and Consequences

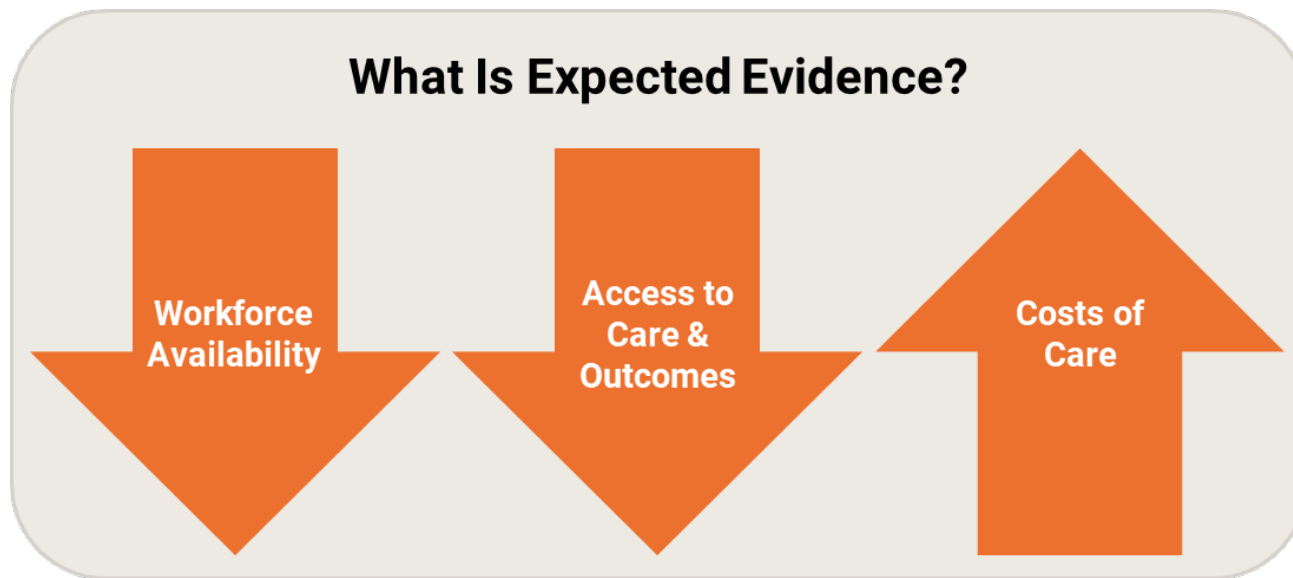
- Difficulties aging at home and increased institutionalization.<sup>3</sup>
- Decreased quality and availability of services.



### References:

1. Gunadi, C. (2024). The Unintended Consequence of Stringent Immigration Enforcement on Staffing Levels in Nursing Homes: Evidence from Secure Communities. *Oxford Bulletin of Economics and Statistics*. <https://doi.org/10.1111/obes.12643>
2. Kreider, A., & Werner, R. M. (2025). Immigration enforcement, the supply of home care workers, and access to long-term care: evidence from secure communities. *SSRN*. [https://papers.ssrn.com/sol3/papers.cfm?abstract\\_id=5119523](https://papers.ssrn.com/sol3/papers.cfm?abstract_id=5119523)
3. Almuhaissen, A., Amuedo-Dorantes, C., & Furtado, D. (2024). Immigration enforcement and the institutionalization of elderly Americans. *Journal of Health Economics*, 94, 102859. <https://doi.org/10.2139/ssrn.4536983>

# Potential Impacts on Access to Care & Increased Costs for Patients, Payors, & Taxpayers



- Barriers impacting access to healthcare services and treatment availability.
- Increased challenges for older adults with Medicaid coverage.<sup>1</sup>
- Poorer outcomes and quality of care may exacerbate hospitalizations and institutionalization <sup>2</sup>
- Potential cost increases for patients, families, payors, and taxpayers.

References:

1. Kreider, A., & Werner, R. M. (2025). Immigration enforcement, the supply of home care workers, and access to long-term care: evidence from secure communities. *SSRN*. [https://papers.ssrn.com/sol3/papers.cfm?abstract\\_id=5119523](https://papers.ssrn.com/sol3/papers.cfm?abstract_id=5119523)

2. Almuhaissen, A., Amuedo-Dorantes, C., & Furtado, D. (2024). Immigration enforcement and the institutionalization of elderly Americans. *Journal of Health Economics*, 94, 102859. <https://doi.org/10.2139/ssrn.4536983>

# How do we bridge gaps to understand impacts?

❖ Maria-Elena De Trinidad Young, PhD, MPH  
*Professor, UC Merced*



# Evidence & Gaps on the Impacts of Immigration Policy Enforcement on the Aging & LTC Sectors

## What Are The Evidence Gaps?

Scale & Composition of  
Workforce Shortages

Magnitude & Consequences  
of Change in Access to Care &  
Outcomes

Degree of Change in Costs of  
Care for Patients, Payors, &  
Taxpayers

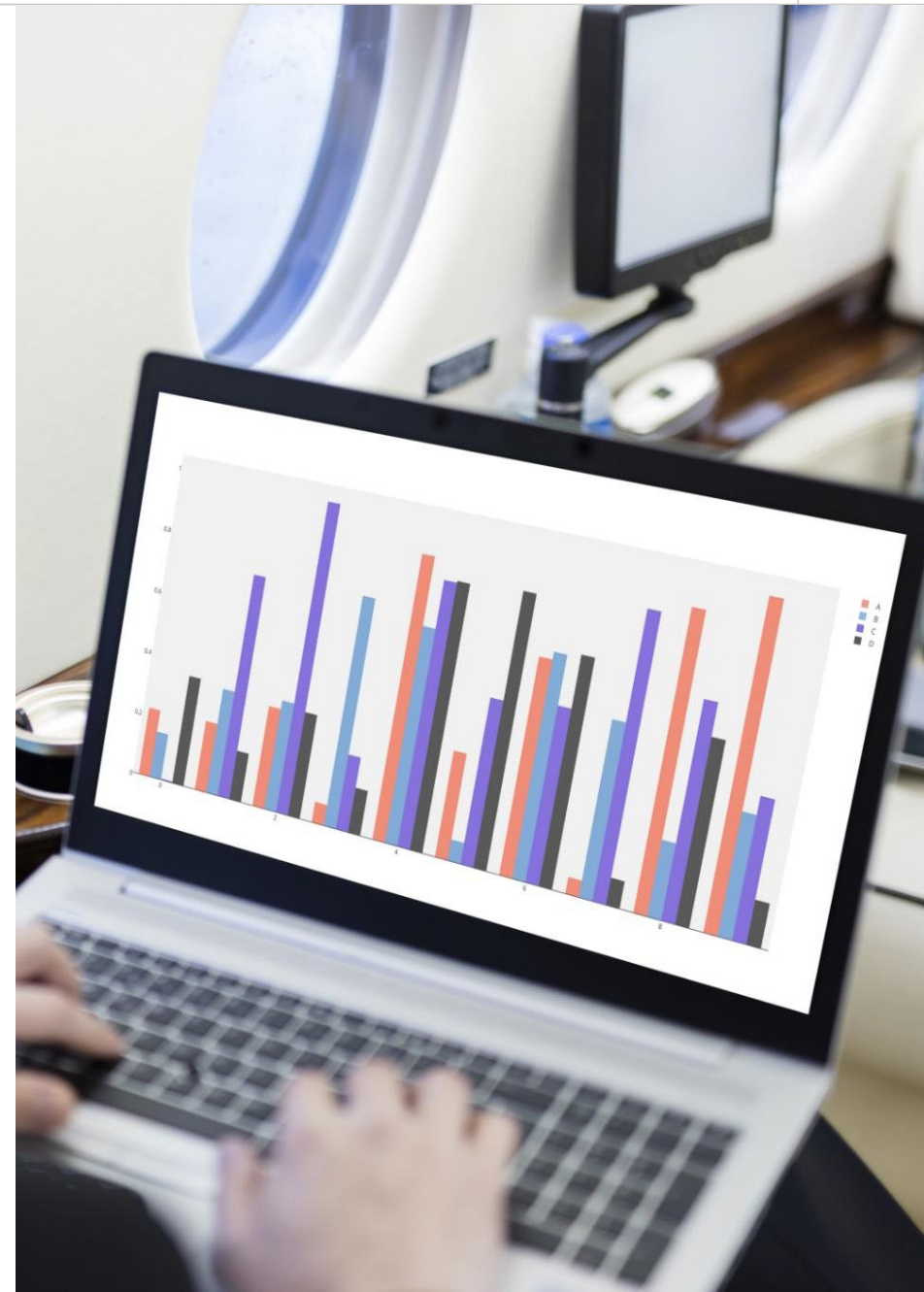
# Evidence Gaps & Future Directions

**Listen to Understand Potential Impacts**

**Assess Available Data**

**Identify Evidence and Gaps**

**Disseminate to Inform Policy and Action**



# Next Steps

**Need to understand the impacts of recent immigration policy enforcement**

**Conduct a deep dive into the data and qualitative interviews with key stakeholders for a public-facing white paper to inform decision making**



# Conclusion

## **Economic Impact Awareness**

Recognizing the effects of immigration policy enforcement helps address financial challenges in the aging care sectors.

## **Policy Informed Decisions**

Informed policies are essential to support caregivers and ensure accessible care for older adults.

## **Actionable Management**

Strategies for effectiveness & sustainability of aging care services amidst enforcement impacts.

# How have people and organizations you know been impacted as of today?

- ❖ Seciah Aquino, DrPH  
*Executive Director  
Latino Coalition  
for a Healthy California*
- ❖ Romeo Hebron  
*Executive Director  
The Filipino Migrant  
Center*



# Thank you.

**Shri Parashuram, MSc, MPH, PhD**  
NORC Senior Fellow  
Parashuram-Shriram@norc.org

---

 Research You Can Trust™

---

 **NORC** at the  
University of  
Chicago



**California has a greater proportion of immigrants in the Aging & LTC workforce relative to the nation**

What impacts of Immigration Policy Enforcement are you seeing in the Aging & LTC Sector?

